

**Risky
Behaviour
Workbook
Yr3 and 4**

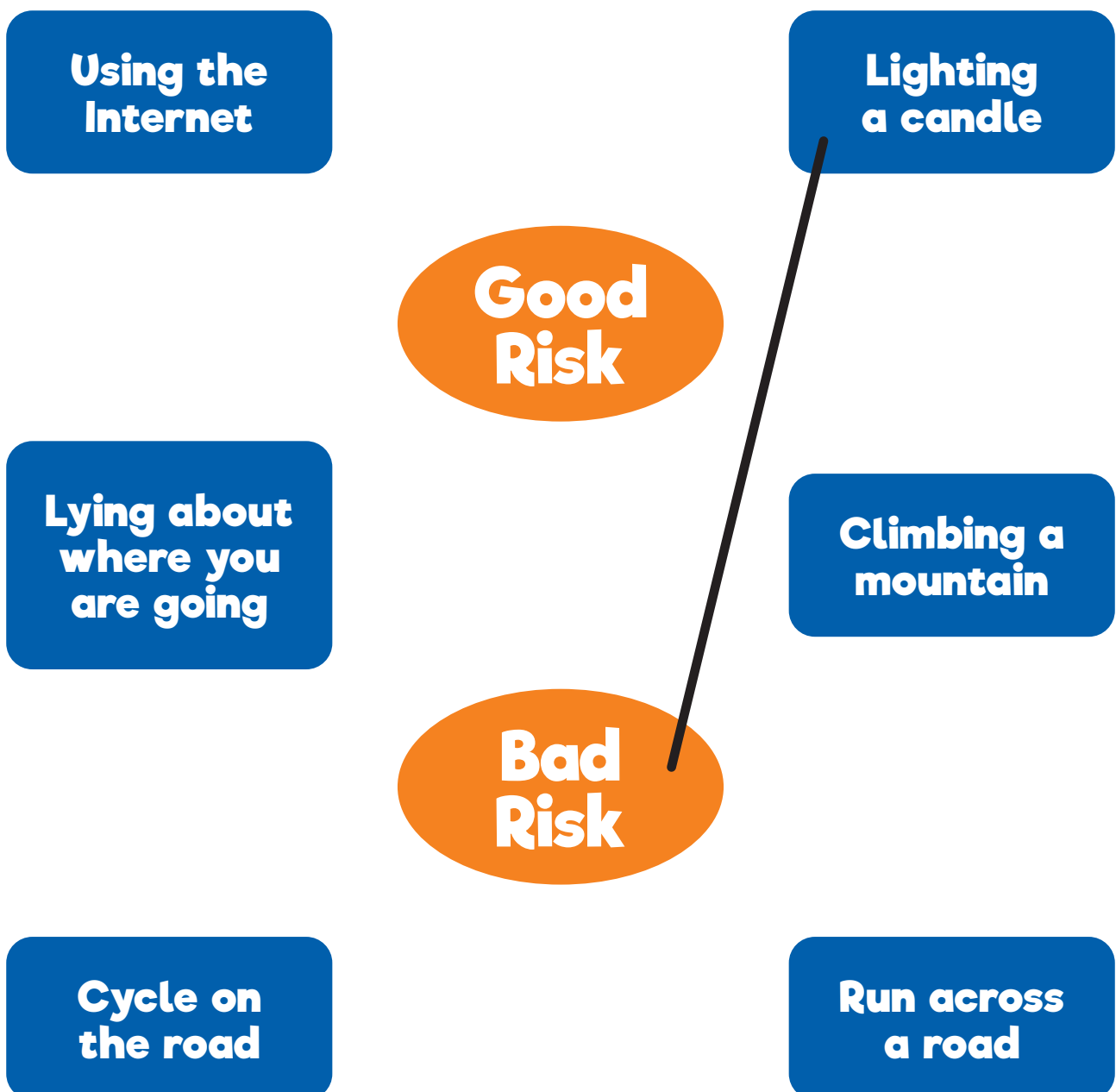


**NORTHUMBRIA
POLICE**

What is Risk?

Think about the word '**RISK**' what does it mean to you?

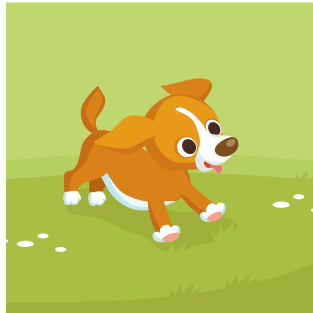
Look at the statements in the boxes below, draw a line from each picture to the correct risk type (one has been done for you)



Now look at the comic strip below and answer the questions.



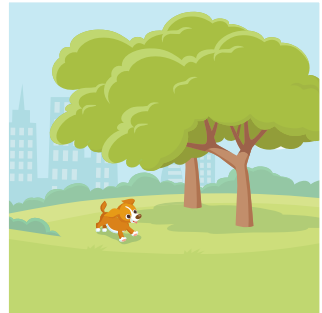
Alex is in the park playing with friends



A worried person tells Alex they have lost their new puppy



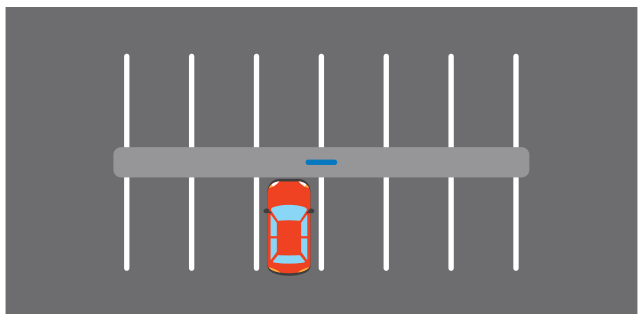
The person asks if they could help look for the puppy called Scruff



Scruff was last seen running in to the trees at the bottom of the park



The person asks Alex and friends to take the dog to their car in the car park



They will know which car as no one else is in the car park

Should Alex help look for Scruff?

What are the risks?

Should Alex take the dog to the car?

What are the risks?

Here are a few important things to remember:

A stranger is someone you do not know, they can be a man / woman / girl / boy and they can be any age.

- Never go anywhere without your grown-up
- Do not speak to strangers
- Never go off with anybody without speaking to your grown-up first
- Always play where your grown-up knows you are
- Never take anything from a stranger

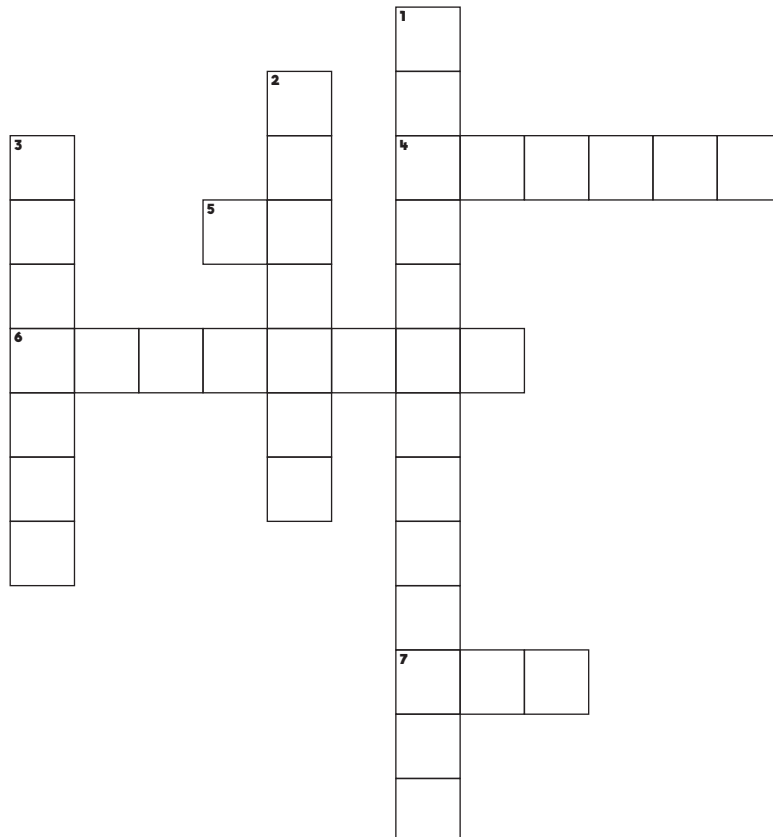
Now try this crossword activity.

Across

4. If someone tries to get me to go with them, I should shout NO _____?
5. It's ok for me to tell people _____
6. A _____ is someone we don't know
7. Never get into a stranger's _____

Down

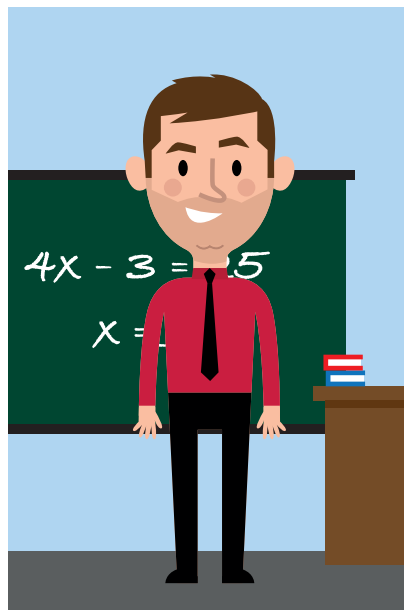
1. An adult who will help me. They drive a car with blue lights and sirens
2. I should only play where my _____ knows where I am
3. If I am in trouble I should tell a _____ adult



Loudly | Police Officer | Grown up |
car | no | trusted | stranger

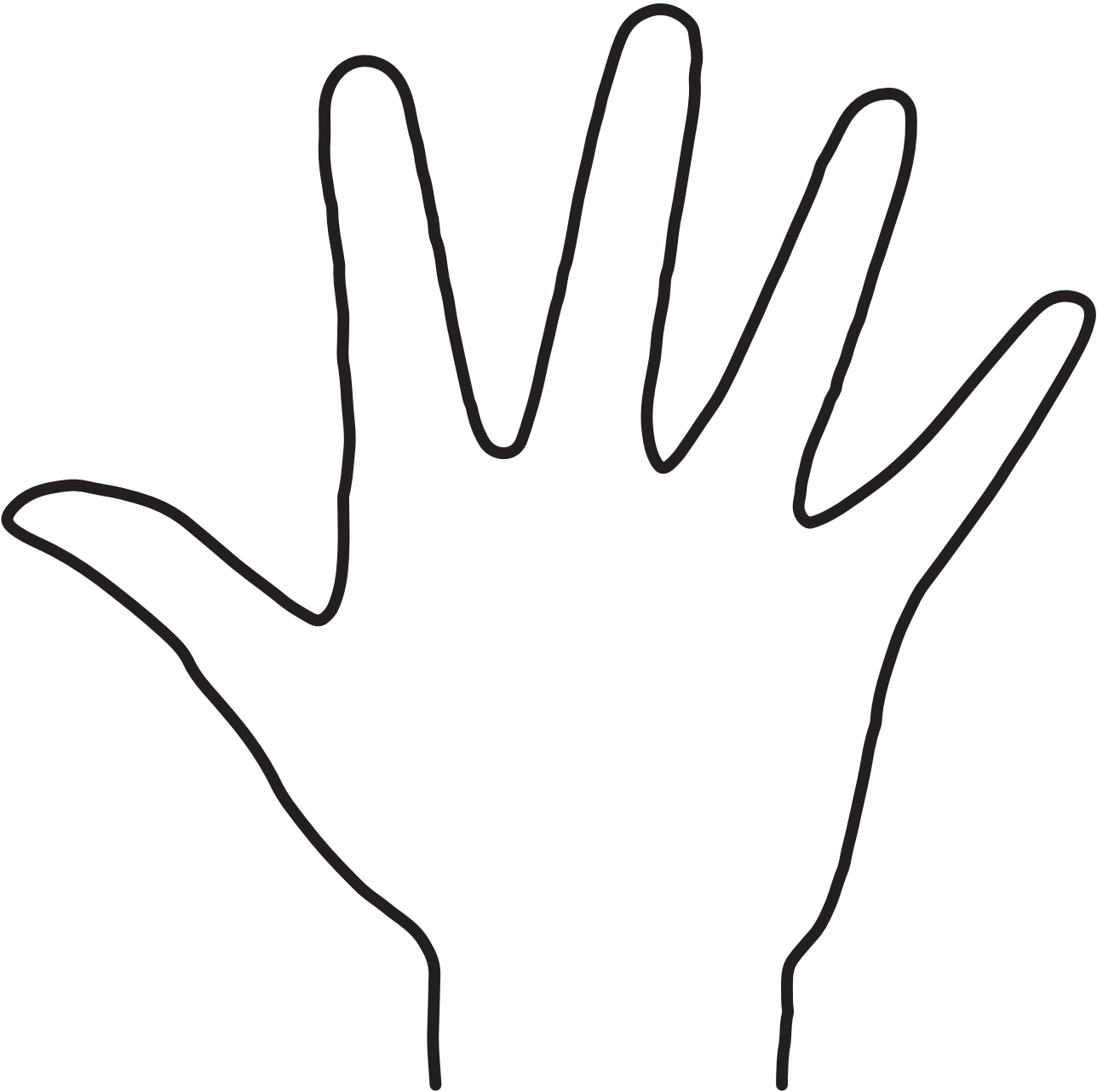
Not all strangers are bad strangers but it is important to recognise safe strangers. These are trusted people we can go to if ever we need help and our grown-up is not near.

Safe strangers wear a uniform and a name badge.



Above are some examples of safe strangers, see if you can come up with anymore on the next sheet.

Think about adults that you trust, on the hand below in each finger and the thumb can you write 5 adults that you trust?



Finally can you decode the sentence using the letters linked to each number?

1	2	3	4	5	6	7	8	9	10	11	12	13	14	15	16	17	18	19	20	21	22	23	24	25	26
A	B	C	D	E	F	G	H	I	J	K	L	M	N	O	P	Q	R	S	T	U	V	W	X	Y	Z

9	6	9	1	13	9	14	4	1	14	7	5	18	9

23	9	12	12	19	5	5	11	8	5	12	16	6	18	15	13

9	20	18	21	19	20	5	4	1	4	21	12	20

Answer: IF I AM IN DANGER I WILL SEEK HELP FROM A TRUSTED ADULT

Well Done

You have done a fantastic job on helping us to keep you safe. Can you please remember everything you have learnt in this booklet and stay super safe.

Always remember if you are ever in real danger and need help ask a safe stranger, a trusted adult or ring the emergency services on





www.northumbria.police.uk